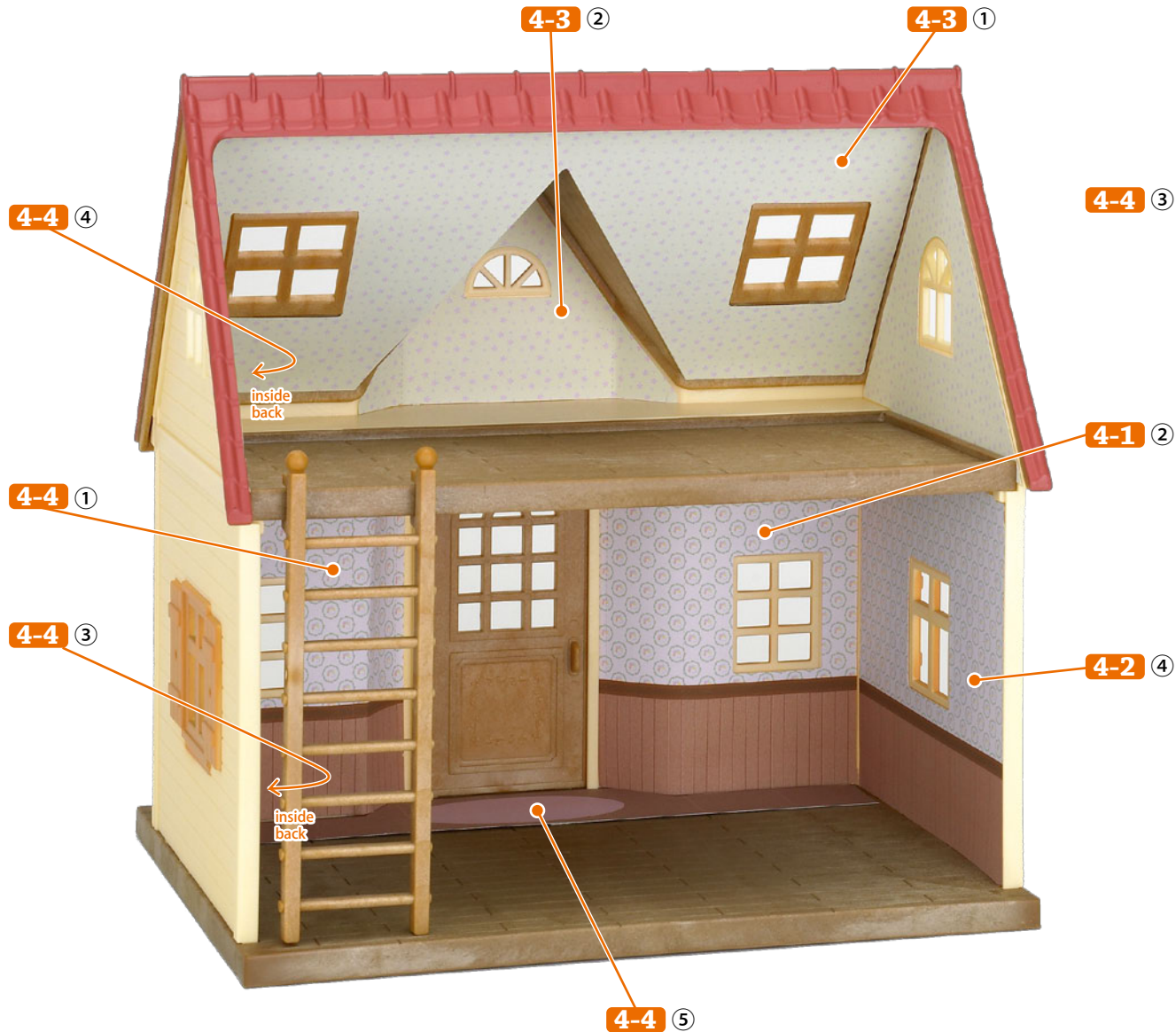




WallPaper Sheet

Cozy Cottage Starer Home

DRECTIONS: With the help of parent / guardian, print out the Cozy Cottage Starter Home wallpaper on 8.5" x 11" size paper. A thicker cardstock paper is a better choice. Using scissors, follow the line to cut out the wallpaper. Place double-sided tape on the blank side of the paper and follow the diagram below to see where to place the wallpaper.



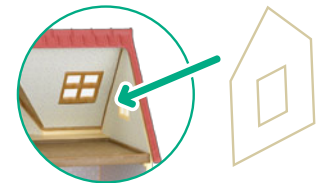
① Follow the line to cut out the wallpaper.



② Place double sided tape on the blank side of the wallpaper.



③ Follow diagram to place the wallpaper.





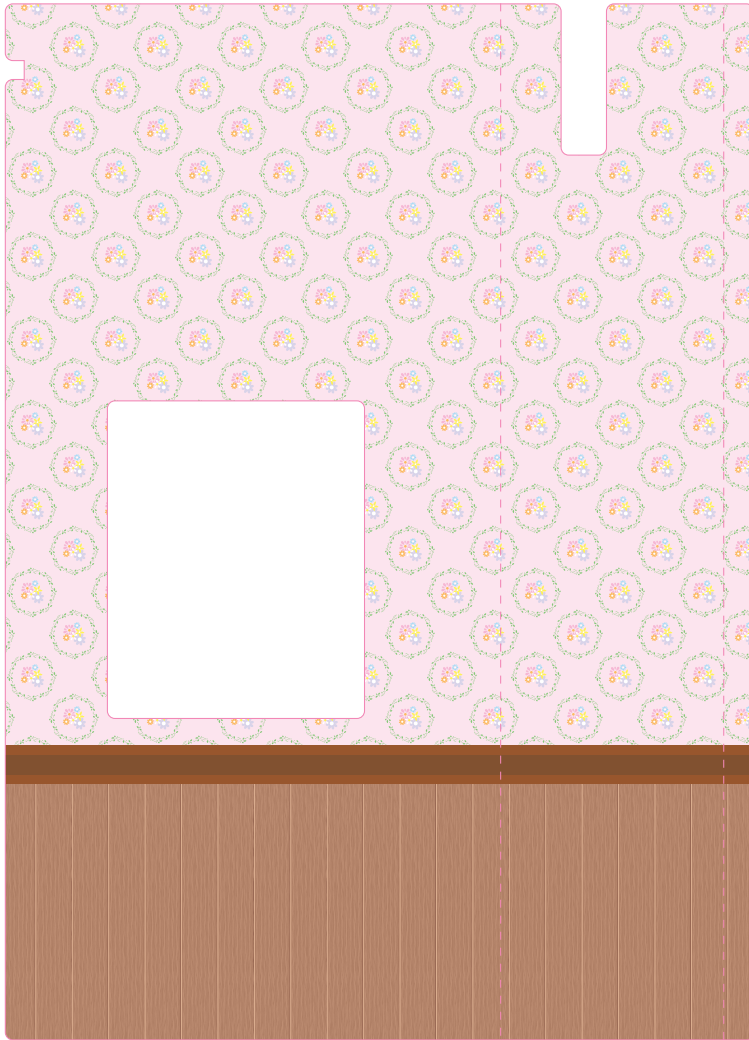
Cozy Cottage Starer Home

Wall Paper Sheet **4-1**



1st floor Left side ①

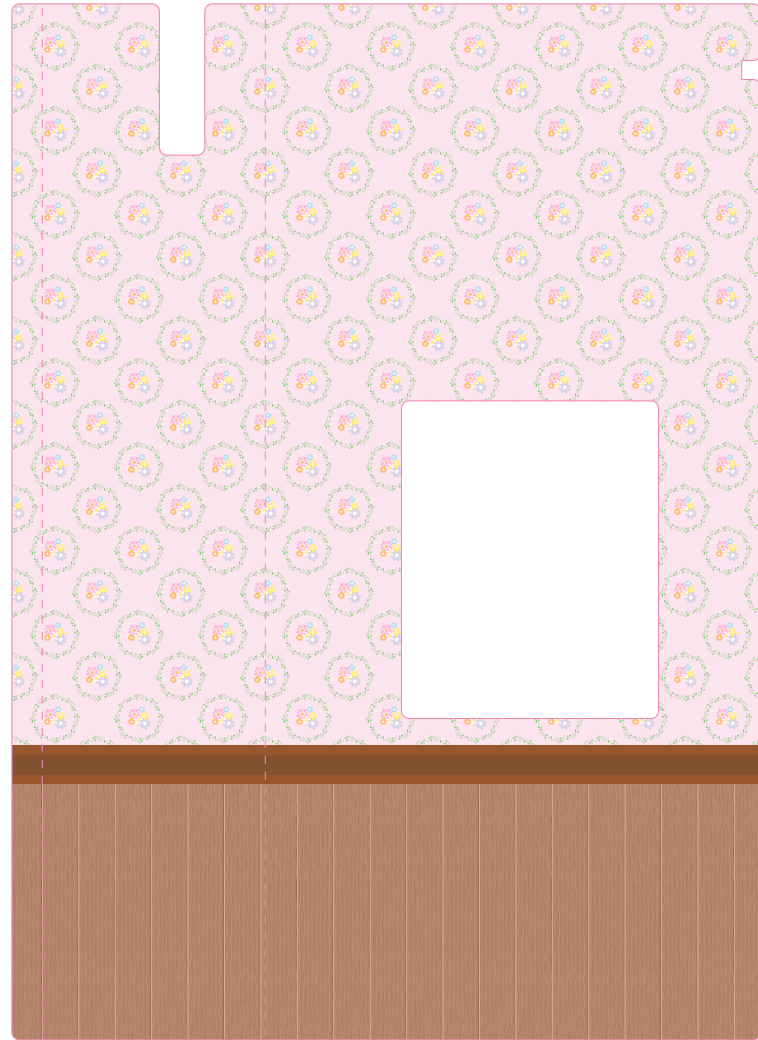
Top



Bottom

1st floor Right side ②

Top



Bottom

— Follow the line to cut out.
- - - Follow the dotted line to bend.

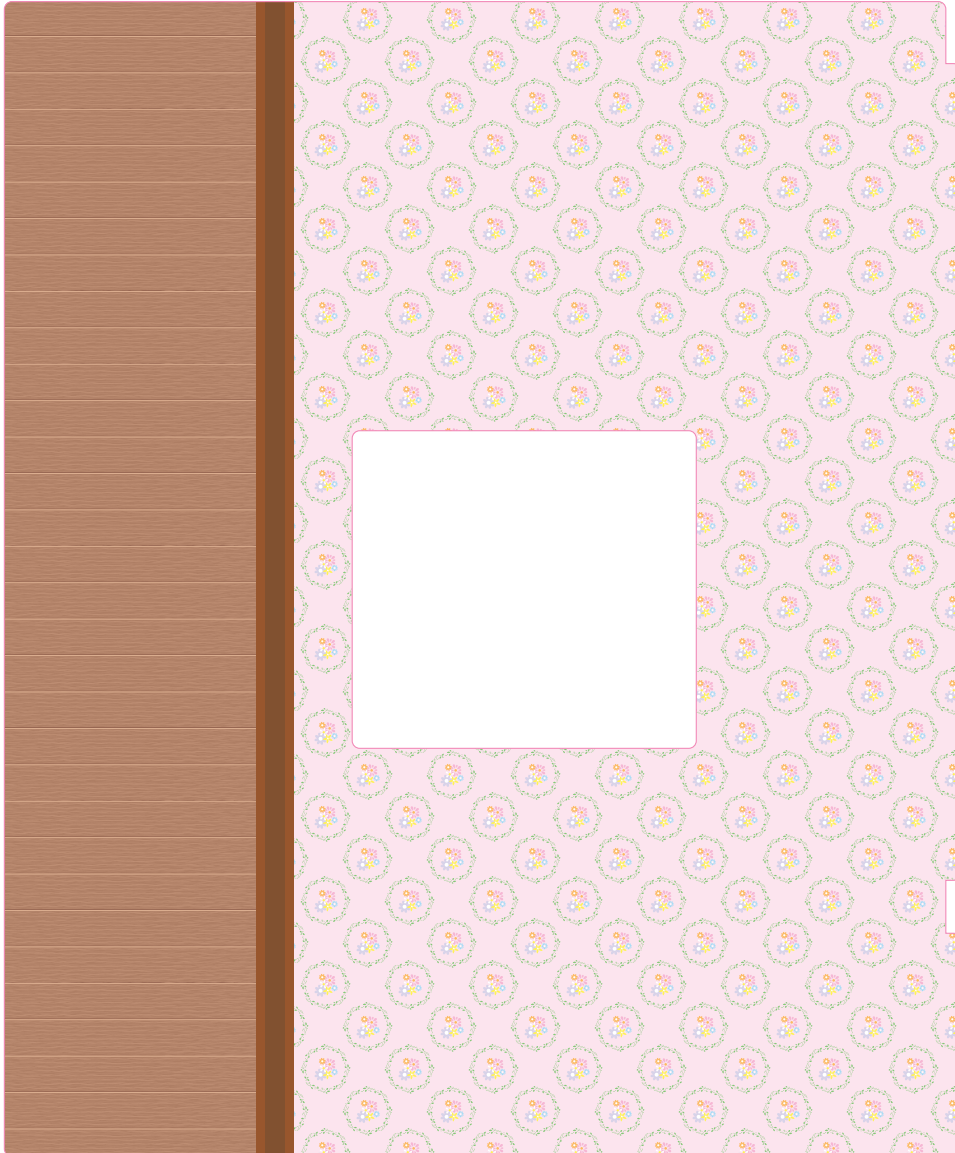


Cozy Cottage Starer Home

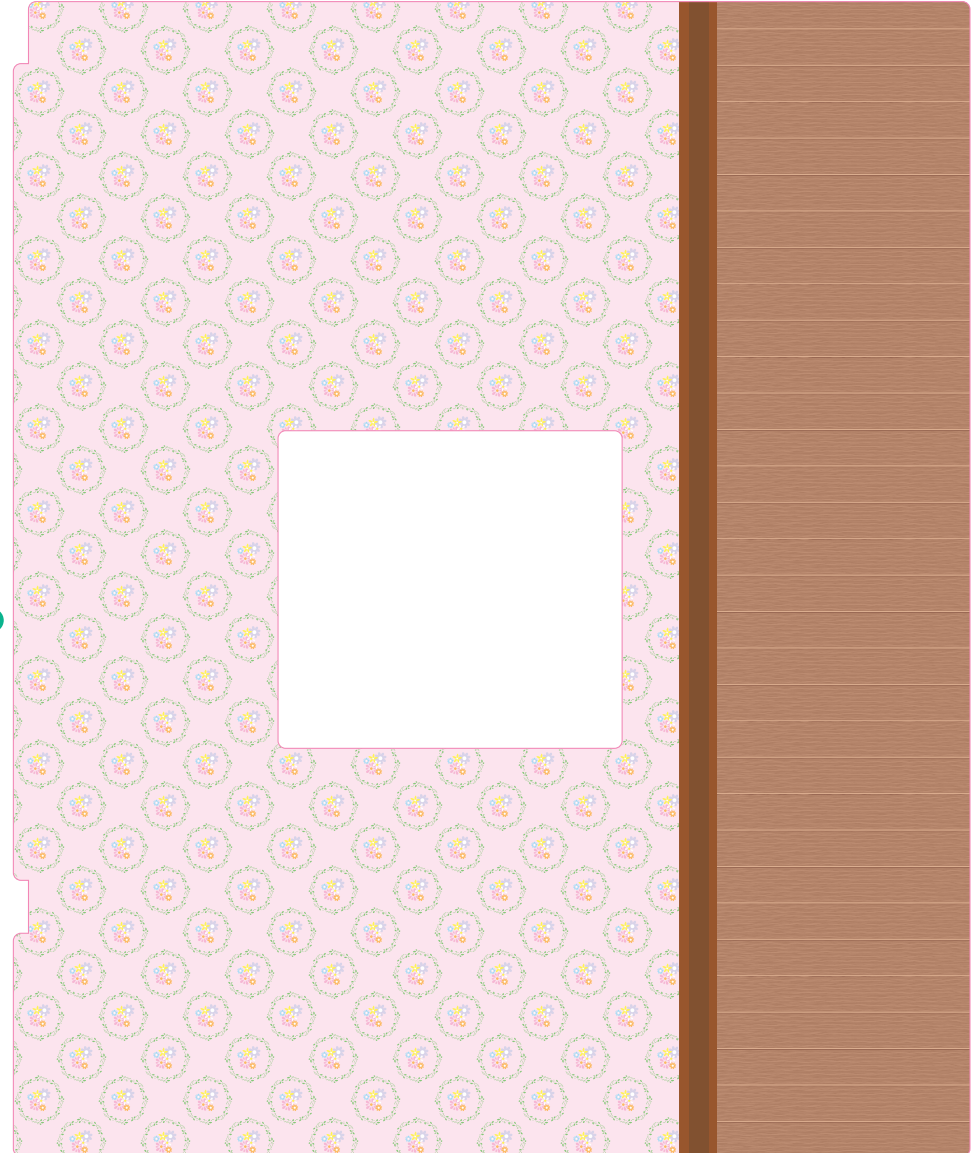
Wall Paper Sheet 4-2



1st floor Left side ③



1st floor Right side ④



— Follow the line to cut out.

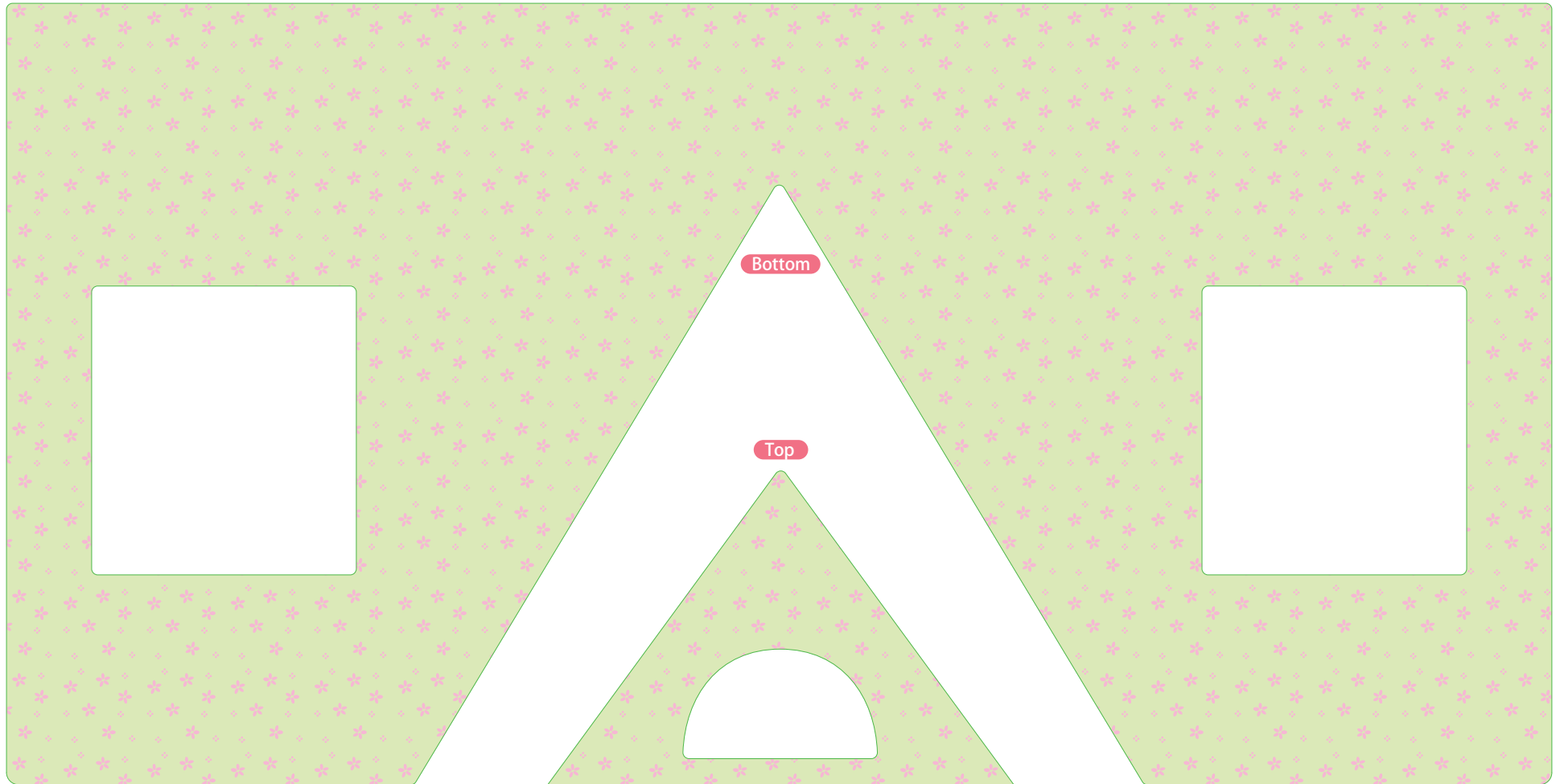


Cozy Cottage Starer Home

Wall Paper Sheet 4-3



Top



2nd floor ①

2nd floor ②

Bottom

— Follow the line to cut out.

- - - Follow the dotted line to bend.



Cozy Cottage Starer Home

Wall Paper Sheet (4-4)



— Follow the line to cut out.

Bottom

Top

2nd floor ③

2nd floor ④

Top

Bottom

2nd floor ⑤

Top

Bottom

